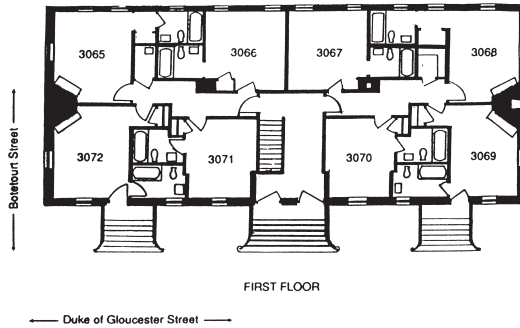




## BRICK HOUSE TAVERN

The Brick House Tavern is located on Duke of Gloucester Street. It has 16 rooms, all have private, full baths. The Brick House has always been used as lodging. In 1770, the innkeeper, Mary Davis, advertised “12 or 14 very good lodging rooms” and also noted that the first-floor rooms were reserved for ladies and the rooms above for gentlemen.

There is a Great Room with fireplace in the cellar. The first floor has eight rooms. There are three queen beds, two double beds, and three twin beds.



The second floor has eight rooms. There are two rooms with double beds, four with twin beds, and two with queen beds. This tavern is an excellent choice for large family reunions and gatherings.

