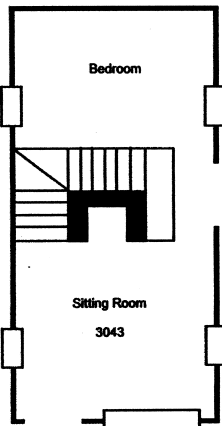




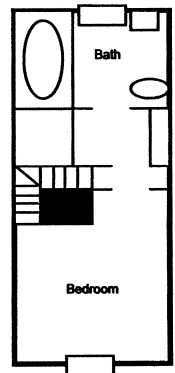
### ISHAM GODDIN SHOP

Isham Goddin, a militiaman from New Kent County, acquired the small shop for £200 in 1778. He sold the plot in 1783 for £90 and returned to New Kent County. His losses reflect wartime inflation and the collapse of Williamsburg property values after the capital moved.

It is a two-bedroom house located near the gardens for Christiana Campbell’s Tavern. The first floor has a sitting room with fireplace and a bedroom with queen canopy bed. The second floor has two twin beds. The full bath facilities are located on the second floor. The pitched roofline creates a unique feeling in the upstairs bedroom area.



FIRST FLOOR



SECOND FLOOR

