

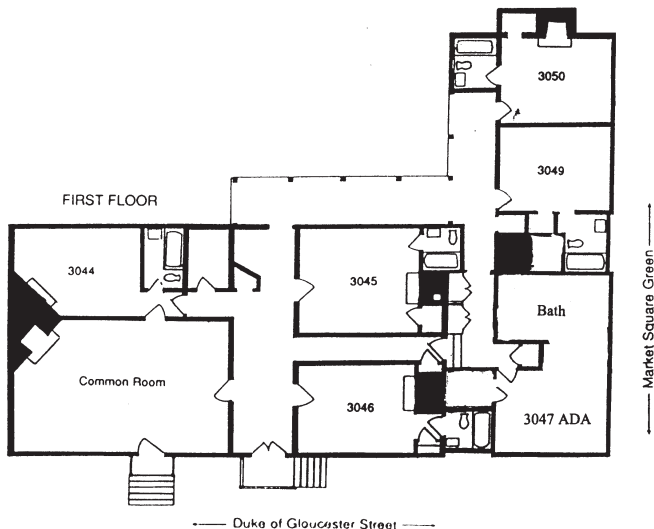


## MARKET SQUARE TAVERN

The Market Square Tavern is located on Duke of Gloucester Street next to Market Square. It has 11 rooms, one of which is ADA wheelchair accessible. Each room has a full, private bath.

Market Square Tavern was home to Thomas Jefferson during his law studies with George Wythe. He rose early and studied next to the window until the sun's first rays outshone his chamber stick.

There is a Great Room with a fireplace original to the building on the first floor. The first floor has six rooms (one of which has a private fireplace). There are three queen canopy beds, two double canopy beds, and a room with twin beds. (cont.)



The second floor has five rooms. There are three rooms with double beds, one with two double beds, and one with a queen bed. Each room has private, full bath facilities.

The Market Square Tavern is an excellent choice for large family reunions and gatherings.

