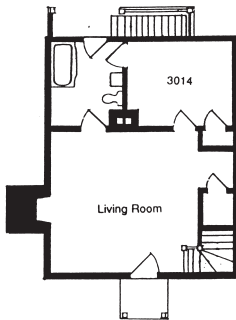


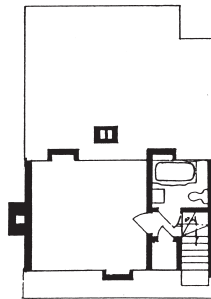
THE QUARTER

The Quarter is an original building. It is commonly thought that this house was used to accommodate indentured servants or slaves. It is located on the corner of East Francis Street and the main drive for the Williamsburg Inn. The first floor has a sitting room and a bedroom with a double bed and full bath. The second floor has twin beds and private, full bath. The roofline creates a unique atmosphere in this room.



FIRST FLOOR

← Francis Street →



SEC

← Francis Street →